

# PRIMUS **PG5** IP67 LED



**PG5D** | IP67 | SYSTEM LUMINAIRE



**PG5E** | IP67 | SYSTEM LUMINAIRE

Design meets function. The Primus PG5 is a powerful LED lens luminaire with increased degree of protection (IP67). The luminaire enclosure can be opened without tools and therefore does not need any screws that disrupt the clear design. Equipped with the lens of your choice, PRIMUS PG5 is suitable for lighting open areas and escape routes in accordance with EN 1838, in all areas and at all installation heights.

**PRIMUS PG5****SYSTEM LUMINAIRE**

Degree of protection	IP67
Class	II
Enclosure material	Polycarbonate
Enclosure colour/surface	white
Terminal block	3 x 2.5 <sup>□</sup> for through wiring
Light source	LED
Ambient temperature	-20° C to +40° C
Connected load (AC/DC)	8.5 VA/5.2 W
Supply voltage	230V ± 10 %, 50/60 Hz / 176-275 V DC

**VERSIONS**

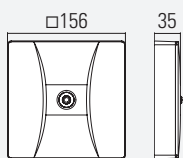
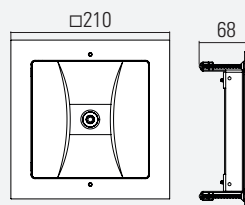
1 h with auto-check   with BUS check	
3 h with auto-check   with BUS check	
8 h with auto-check   with BUS check	
without monitoring module	•
with monitoring module	•
with DALI monitoring	

**SPECIAL FEATURE**

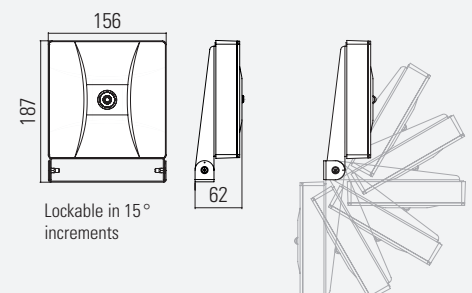
- Very high degree of protection (IP67)

**OPTIONS / ACCESSORIES**

- Ceiling installation frame
- Wall bracket arm (lockable in 15° increments)

**PG5D CEILING MOUNTED****PG5E RECESSED CEILING INSTALLATION**

Ceiling cutout: 190 x 190 mm  
Maximum ceiling thickness: 42 mm

**PG5A WALL BRACKET MOUNTING**

# LENS VERSIONS

## WHICH LENS WOULD YOU LIKE?

Thanks to the modular design of our emergency lighting insert, all the high-performance lenses mentioned here are compatible with all module carriers of the corresponding manufacturers.

### TECHNICAL DATA

Light source	LED
Connected load (AC/DC)	8.5 VA / 5,2 W

### VERSION

without monitoring	•
with monitoring	•
DALI monitoring	



## SYMMETRICAL LENSES FOR OPEN AREAS



S1 LENS  
Installation height  
up to 12 m

---



S2 LENS  
Installation height  
up to 18 m

---



S3 LENS  
Installation height  
up to 30 m

## ASYMMETRICAL LENSES FOR ESCAPE ROUTES



A1 LENS  
Installation height  
up to 11 m

---



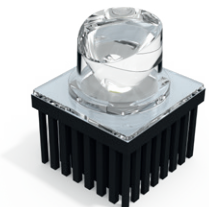
A2 LENS  
Installation height  
up to 16 m

---



A3 LENS  
Installation height up  
to 30 m

## 5 LX LENSE FOR FOCUSED LIGHT



F1 LENS  
Installation height up  
to 3,5 m

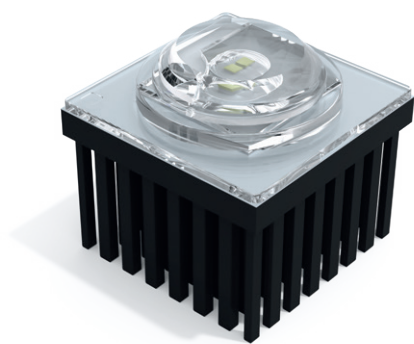
# SYMMETRICAL LENSES

LIGHTING DATA (EN 1838)

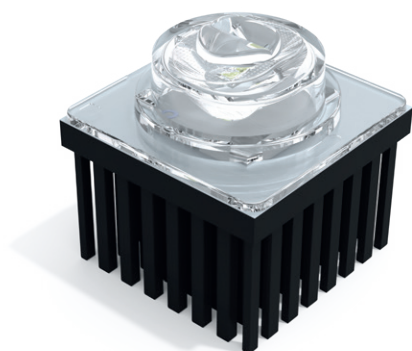
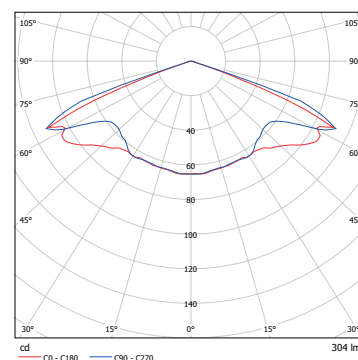
## VARIABLE HEIGHTS

Three symmetrical lenses are available. These are optimised for different mounting heights (2 to 30 m).

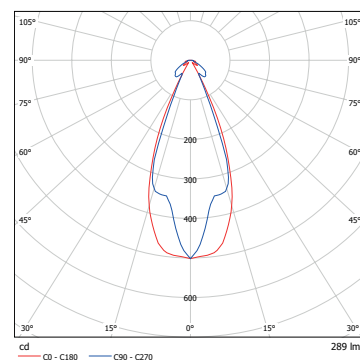
## SYMMETRICAL LENSES FOR OPEN AREAS



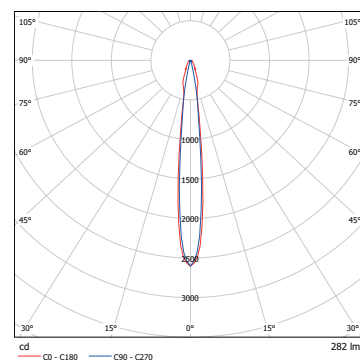
S1 LENS  
Installation  
height up to  
12 m



S2 LENS  
Installation  
height up to  
18 m



S3 LENS  
Installation  
height up to  
30 m



# SYMMETRICAL LENSES

LIGHTING DATA (EN 1838)

Installation height [m]	1 lx Lighting of escape routes						1 lx Lighting of sales areas (self-service stores)						0.5 lx Lighting of open areas > 60m <sup>2</sup> (anti-panic lighting)					
	S1 lens	S2 lens	S3 lens	S1 lens	S2 lens	S3 lens	S1 lens	S2 lens	S3 lens	S1 lens	S2 lens	S3 lens	S1 lens	S2 lens	S3 lens	S1 lens	S2 lens	S3 lens
2.00	4.50			10.00			3.25			7.75			4.00			8.25		
2.50	4.75			13.50			4.00			10.75			5.25			11.75		
3.00	4.25			13.50			4.00			10.75			5.25			11.75		
4.00	4.00	2.25		12.75	5.00		3.75	1.75		12.25	5.00		6.00	2.25		14.75	7.00	
5.00	3.75	2.75		11.50	6.00		2.50	2.00		11.25	5.50		5.75	2.50		16.50	6.75	
6.00	3.25	3.00		11.00	6.75		2.50	2.75		11.50	6.00		5.00	2.75		16.50	7.25	
7.00	2.25	3.25		11.25	7.75		2.50	3.00		11.50	6.75		4.75	3.00		14.50	8.00	
8.00	1.50	3.50	2.00	6.50	8.25	4.75	2.75	3.25	1.25	9.00	7.50	5.25	3.75	3.50	2.75	15.25	8.50	5.50
9.00		4.00	2.25		9.00	5.25	1.25	3.50	1.75	10.25	8.25	5.50	2.50	4.00	1.50	17.50	9.00	6.75
10.00		4.00	2.25		9.50	5.50	1.25	3.75	2.25	8.00	8.75	5.75	1.75	4.25	2.00	17.75	9.75	7.00
11.00		4.25	2.50		10.00	5.75	1.00	3.75	1.50	6.75	9.25	6.25	1.75	4.50	2.75	17.50	10.50	7.25
12.00		4.50	2.75		10.50	6.25	1.00	4.00	1.75	5.50	9.50	6.25	1.50	4.75	3.25	17.00	11.25	7.50
13.00		4.75	2.75		11.00	6.50		4.00	1.75		10.00	6.50		4.50	2.75		12.00	8.00
14.00		4.75	2.75		11.50	6.75		3.75	1.75		10.25	6.50		5.00	3.00		12.50	8.25
15.00		4.50	3.00		12.00	7.00		3.75	1.75		10.50	6.75		5.25	3.00		13.00	8.50
16.00		4.00	3.00		12.50	7.50		3.50	2.00		10.75	6.50		5.25	3.00		13.25	8.75
17.00		2.25	3.25		12.75	7.75		3.00	2.00		11.00	7.00		5.50	3.00		13.75	8.75
18.00		1.75	3.25		11.75	8.00		2.00	2.00		11.00	7.00		4.75	3.00		14.00	9.00
19.00			3.25			8.25			2.25			7.25			3.00			9.25
20.00			3.25			8.50			2.25			7.50			3.00			9.50
21.00			3.25			8.75			2.25			7.50			3.00			9.50
22.00			3.25			8.75			3.25			7.50			3.25			9.00
23.00			3.25			9.00			2.50			8.00			3.25			9.50
24.00			3.25			9.25			2.50			8.00			3.25			10.00
25.00			3.25			9.25			2.50			8.25			3.25			10.00
26.00			3.25			9.50			2.75			8.25			3.50			10.25
27.00			3.25			9.50			2.75			8.50			3.75			10.25
28.00			3.25			9.50			2.50			8.75			3.75			10.50
29.00			3.25			9.50			2.50			8.75			3.50			10.75
30.00			3.25			9.50			2.75			9.00			3.75			10.75

This table of distances (in metres) is based on the following factors:  
measurement plane 2 cm, maintenance factor MF = 80 %, reflectance: 0

Dated: April 2021

# ASYMMETRICAL LENSES

LIGHTING DATA (EN 1838)

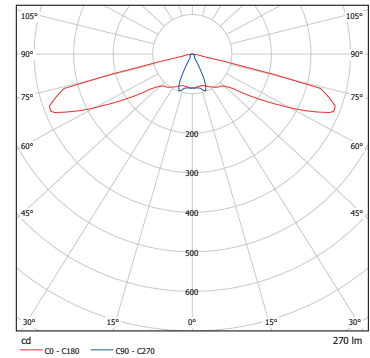
## VARIABLE HEIGHTS

Three asymmetrical lenses are available. These are optimised for different mounting heights (2 to 30 m).

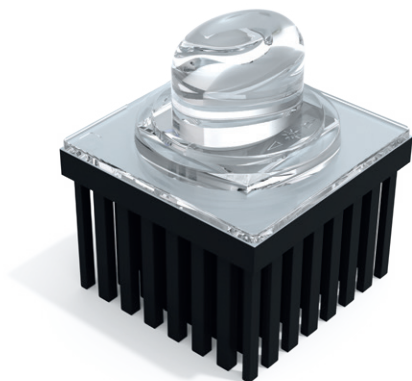
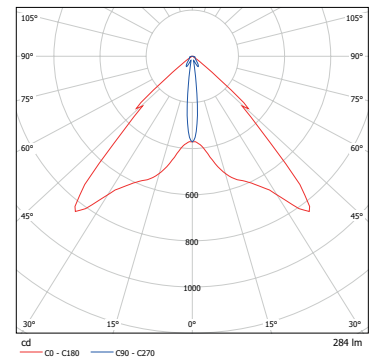
## ASYMMETRICAL LENSES FOR ESCAPE ROUTES



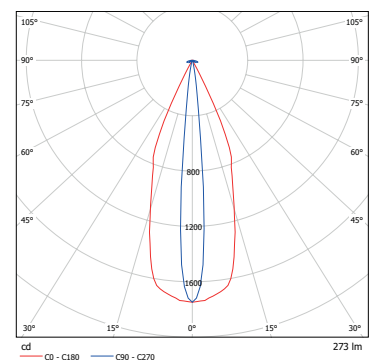
**A1 LENS**  
Installation  
height up to  
11 m



**A2 LENS**  
Installation  
height up to  
16 m



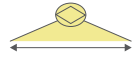


**A3 LENS**  
Installation  
height up to  
30 m



# ASYMMETRICAL LENSES

## LIGHTING DATA (EN 1838)

1 lx Lighting of escape routes									
Installation height [m]									
	A1 lens	A2 lens	A3 lens	A1 lens	A2 lens	A3 lens	A1 lens	A2 lens	A3 lens
2.00	7.25			16.00			14.25		
2.50	8.00			19.00			17.00		
3.00	8.50			21.50			17.25		
4.00	9.50	4.75		24.50	10.50		18.75	10.00	
5.00	8.75	5.75		26.50	12.50		17.50	12.00	
6.00	5.25	6.75		27.50	14.50		10.50	14.00	
7.00	4.50	7.75		24.00	16.75		8.25	16.00	
8.00	4.00	8.75	4.00	16.50	18.75	8.75	2.00	17.75	8.25
9.00	2.75	9.00	4.50	14.50	20.75	9.75		18.00	9.25
10.00	1.00	9.50	5.00	8.50	22.25	10.50		19.50	10.00
11.00	1.00	10.25	5.50	3.75	23.75	11.50		20.50	11.00
12.00		11.00	5.75		25.25	12.50		22.00	10.75
13.00		11.50	6.25		25.75	13.25		23.25	12.75
14.00		12.25	6.75		27.00	14.25		24.50	13.50
15.00		12.75	7.00		28.50	15.25		25.75	14.25
16.00		13.25	7.50		29.75	16.00		26.75	15.00
17.00			7.75			17.00			15.50
18.00			8.00			17.75			16.00
19.00			8.25			18.50			16.50
20.00			8.50			19.25			17.00
21.00			8.50			20.00			17.00
22.00			8.50			20.75			17.00
23.00			8.25			21.50			16.75
24.00			8.25			21.50			16.50
25.00			8.00			22.00			16.25
26.00			8.00			22.25			16.00
27.00			8.00			22.75			16.00
28.00			7.75			23.00			15.75
29.00			7.75			23.25			15.50
30.00			7.50			23.50			15.00

This table of distances (in metres) is based on the following factors:  
 measurement plane 2 cm, maintenance factor MF = 80 %, reflectance: 0

Dated: April 2021



# 5 LX LENS

## LIGHTING DATA (EN 1838)

The EN 1838 standard requires safety lighting near every fire-fighting and alarm system as well as first-aid equipment. We have developed the F1 lens for this purpose. The high-performance lens focuses the light according to the specifications of EN 1838 so that a vertical illuminance of 5 lx is achieved.

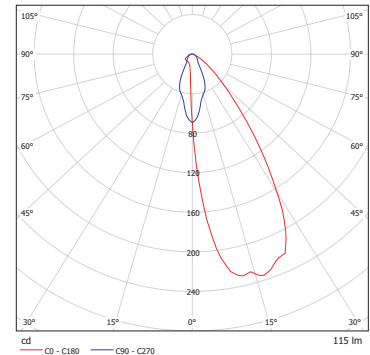
Normative illumination with 5 lx according to EN 1838 and ISO 23601 is required for:

- Fire-fighting equipment (fire extinguishers)
- Safety equipment (first aid boxes)
- Signalling equipment (manual fire detectors)
- Escape and rescue plans

## 5 LX LENS FOR FOCUSSED LIGHT



F1 LENS  
Installation  
height up to  
3,5 m



The EN 54

Non-automatic fire detectors must be installed at a height of 140 cm (+/- 20 cm) above the floor.

