

LED Spot **LG5** IP20 | IP40 LED



LG5D | IP40 | SYSTEM LUMINAIRE



LG5E | IP20 | SYSTEM LUMINAIRE

Square, practical, powerful. The efficient LED Spot LG5 is a modern lens luminaire for lighting open areas and escape routes in accordance with EN 1838. With the right lens, the LED Spot LG5 is the right choice for any installation height and type of lighting.

LED Spot **LG5**

SYSTEM LUMINAIRE

Degree of protection	IP20 recessed IP40 surface mounted
Class	I
Enclosure material	Sheet steel
Enclosure colour/surface	RAL 9016 white
Terminal block	3 x 2.5 ² for through wiring
Light source	LED
Ambient temperature	-20° C to +40° C
Connected load (AC/DC)	8.5 VA/5.2 W
Supply voltage	230V ± 10 %, 50/60 Hz / 176-275 V DC

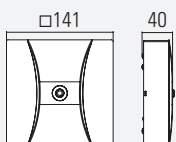
VERSIONS

1 h with auto-check with BUS check	
3 h with auto-check with BUS check	
8 h with auto-check with BUS check	
without monitoring module	•
with monitoring module	•
with DALI monitoring	•

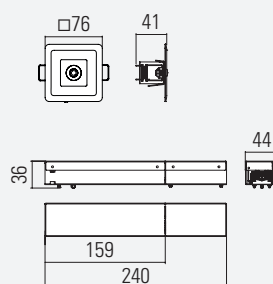
OPTIONS /ACCESSORIES

- Enclosure colours in RAL 7024 (graphite grey) | Other colours on request

LG5D CEILING MOUNTED

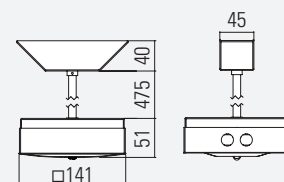


LG5E RECESSED CEILING INSTALLATION



Ceiling cutout: Ø 60 mm
 Maximum ceiling thickness: 42 mm
 Minimum clear ceiling height: 120 mm

LG5P PENDANT



LENS VERSIONS

WHICH LENS WOULD YOU LIKE?

Thanks to the modular design of our emergency lighting insert, all the high-performance lenses mentioned here are compatible with all module carriers of the corresponding manufacturers.

TECHNICAL DATA

Light source	LED
Connected load (AC/DC)	8.5 VA / 5,2 W

VERSION

without monitoring	•
with monitoring	•
DALI monitoring	



SYMMETRICAL LENSES FOR OPEN AREAS



S1 LENS
Installation height
up to 12 m



S2 LENS
Installation height
up to 18 m



S3 LENS
Installation height
up to 30 m

ASYMMETRICAL LENSES FOR ESCAPE ROUTES



A1 LENS
Installation height
up to 11 m

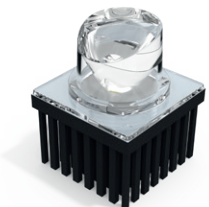


A2 LENS
Installation height
up to 16 m



A3 LENS
Installation height up
to 30 m

5 LX LENSE FOR FOCUSED LIGHT



F1 LENS
Installation height up
to 3,5 m

SYMMETRICAL LENSES

LIGHTING DATA (EN 1838)

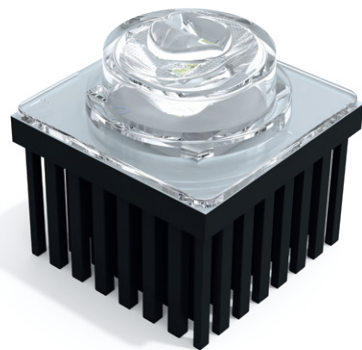
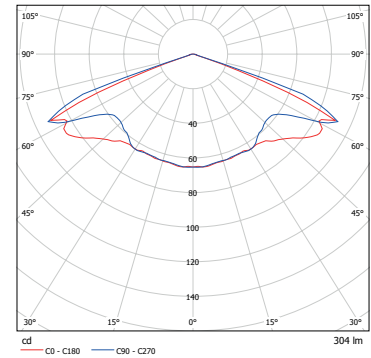
VARIABLE HEIGHTS

Three symmetrical lenses are available. These are optimised for different mounting heights (2 to 30 m).

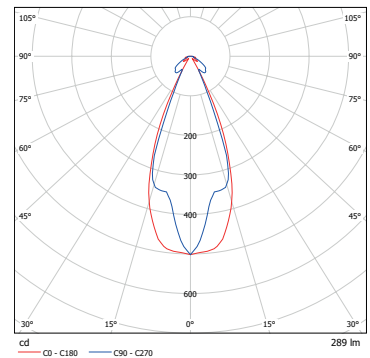
SYMMETRICAL LENSES FOR OPEN AREAS



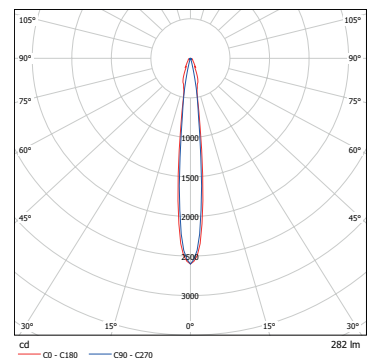
S1 LENS
Installation
height up to
12 m



S2 LENS
Installation
height up to
18 m



S3 LENS
Installation
height up to
30 m



SYMMETRICAL LENSES

LIGHTING DATA (EN 1838)

Installation height [m]	1 lx Lighting of escape routes						1 lx Lighting of sales areas (self-service stores)						0.5 lx Lighting of open areas > 60m ² (anti-panic lighting)					
	S1 lens	S2 lens	S3 lens	S1 lens	S2 lens	S3 lens	S1 lens	S2 lens	S3 lens	S1 lens	S2 lens	S3 lens	S1 lens	S2 lens	S3 lens	S1 lens	S2 lens	S3 lens
2.00	4.50			10.00			3.25			7.75			4.00			8.25		
2.50	4.75			13.50			4.00			10.75			5.25			11.75		
3.00	4.25			13.50			4.00			10.75			5.25			11.75		
4.00	4.00	2.25		12.75	5.00		3.75	1.75		12.25	5.00		6.00	2.25		14.75	7.00	
5.00	3.75	2.75		11.50	6.00		2.50	2.00		11.25	5.50		5.75	2.50		16.50	6.75	
6.00	3.25	3.00		11.00	6.75		2.50	2.75		11.50	6.00		5.00	2.75		16.50	7.25	
7.00	2.25	3.25		11.25	7.75		2.50	3.00		11.50	6.75		4.75	3.00		14.50	8.00	
8.00	1.50	3.50	2.00	6.50	8.25	4.75	2.75	3.25	1.25	9.00	7.50	5.25	3.75	3.50	2.75	15.25	8.50	5.50
9.00		4.00	2.25		9.00	5.25	1.25	3.50	1.75	10.25	8.25	5.50	2.50	4.00	1.50	17.50	9.00	6.75
10.00		4.00	2.25		9.50	5.50	1.25	3.75	2.25	8.00	8.75	5.75	1.75	4.25	2.00	17.75	9.75	7.00
11.00		4.25	2.50		10.00	5.75	1.00	3.75	1.50	6.75	9.25	6.25	1.75	4.50	2.75	17.50	10.50	7.25
12.00		4.50	2.75		10.50	6.25	1.00	4.00	1.75	5.50	9.50	6.25	1.50	4.75	3.25	17.00	11.25	7.50
13.00		4.75	2.75		11.00	6.50		4.00	1.75		10.00	6.50		4.50	2.75		12.00	8.00
14.00		4.75	2.75		11.50	6.75		3.75	1.75		10.25	6.50		5.00	3.00		12.50	8.25
15.00		4.50	3.00		12.00	7.00		3.75	1.75		10.50	6.75		5.25	3.00		13.00	8.50
16.00		4.00	3.00		12.50	7.50		3.50	2.00		10.75	6.50		5.25	3.00		13.25	8.75
17.00		2.25	3.25		12.75	7.75		3.00	2.00		11.00	7.00		5.50	3.00		13.75	8.75
18.00		1.75	3.25		11.75	8.00		2.00	2.00		11.00	7.00		4.75	3.00		14.00	9.00
19.00			3.25			8.25			2.25			7.25			3.00			9.25
20.00			3.25			8.50			2.25			7.50			3.00			9.50
21.00			3.25			8.75			2.25			7.50			3.00			9.50
22.00			3.25			8.75			3.25			7.50			3.25			9.00
23.00			3.25			9.00			2.50			8.00			3.25			9.50
24.00			3.25			9.25			2.50			8.00			3.25			10.00
25.00			3.25			9.25			2.50			8.25			3.25			10.00
26.00			3.25			9.50			2.75			8.25			3.50			10.25
27.00			3.25			9.50			2.75			8.50			3.75			10.25
28.00			3.25			9.50			2.50			8.75			3.75			10.50
29.00			3.25			9.50			2.50			8.75			3.50			10.75
30.00			3.25			9.50			2.75			9.00			3.75			10.75

This table of distances (in metres) is based on the following factors:
measurement plane 2 cm, maintenance factor MF = 80 %, reflectance: 0

Dated: April 2021

ASYMMETRICAL LENSES

LIGHTING DATA (EN 1838)

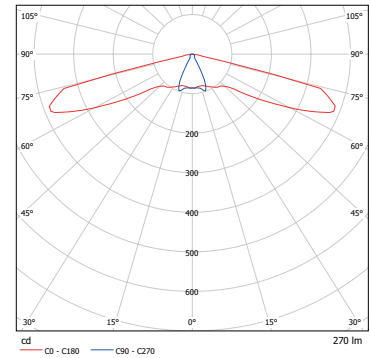
VARIABLE HEIGHTS

Three asymmetrical lenses are available. These are optimised for different mounting heights (2 to 30 m).

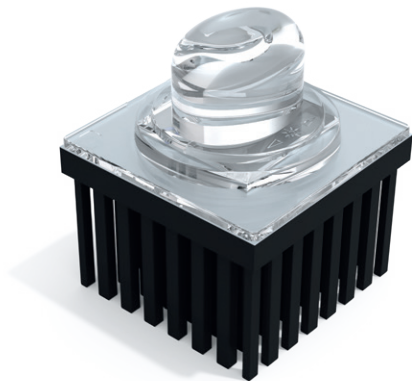
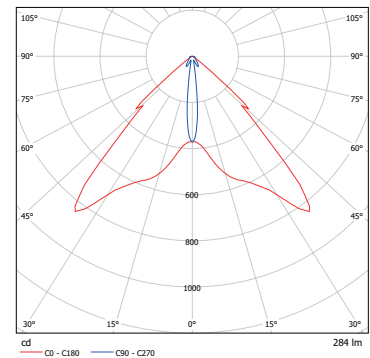
ASYMMETRICAL LENSES FOR ESCAPE ROUTES



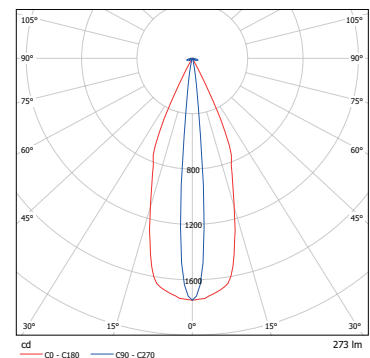
A1 LENS
Installation
height up to
11 m



A2 LENS
Installation
height up to
16 m



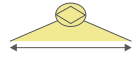


A3 LENS
Installation
height up to
30 m



ASYMMETRICAL LENSES

LIGHTING DATA (EN 1838)

1 lx Lighting of escape routes									
Installation height [m]									
	A1 lens	A2 lens	A3 lens	A1 lens	A2 lens	A3 lens	A1 lens	A2 lens	A3 lens
2.00	7.25			16.00			14.25		
2.50	8.00			19.00			17.00		
3.00	8.50			21.50			17.25		
4.00	9.50	4.75		24.50	10.50		18.75	10.00	
5.00	8.75	5.75		26.50	12.50		17.50	12.00	
6.00	5.25	6.75		27.50	14.50		10.50	14.00	
7.00	4.50	7.75		24.00	16.75		8.25	16.00	
8.00	4.00	8.75	4.00	16.50	18.75	8.75	2.00	17.75	8.25
9.00	2.75	9.00	4.50	14.50	20.75	9.75		18.00	9.25
10.00	1.00	9.50	5.00	8.50	22.25	10.50		19.50	10.00
11.00	1.00	10.25	5.50	3.75	23.75	11.50		20.50	11.00
12.00		11.00	5.75		25.25	12.50		22.00	10.75
13.00		11.50	6.25		25.75	13.25		23.25	12.75
14.00		12.25	6.75		27.00	14.25		24.50	13.50
15.00		12.75	7.00		28.50	15.25		25.75	14.25
16.00		13.25	7.50		29.75	16.00		26.75	15.00
17.00			7.75			17.00			15.50
18.00			8.00			17.75			16.00
19.00			8.25			18.50			16.50
20.00			8.50			19.25			17.00
21.00			8.50			20.00			17.00
22.00			8.50			20.75			17.00
23.00			8.25			21.50			16.75
24.00			8.25			21.50			16.50
25.00			8.00			22.00			16.25
26.00			8.00			22.25			16.00
27.00			8.00			22.75			16.00
28.00			7.75			23.00			15.75
29.00			7.75			23.25			15.50
30.00			7.50			23.50			15.00

This table of distances (in metres) is based on the following factors:
 measurement plane 2 cm, maintenance factor MF = 80 %, reflectance: 0

Dated: April 2021

5 LX LENS

LIGHTING DATA (EN 1838)

The EN 1838 standard requires safety lighting near every fire-fighting and alarm system as well as first-aid equipment. We have developed the F1 lens for this purpose. The high-performance lens focuses the light according to the specifications of EN 1838 so that a vertical illuminance of 5 lx is achieved.

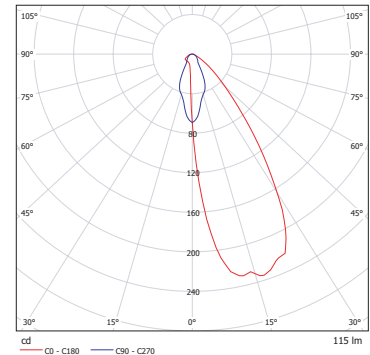
Normative illumination with 5 lx according to EN 1838 and ISO 23601 is required for:

- Fire-fighting equipment (fire extinguishers)
- Safety equipment (first aid boxes)
- Signalling equipment (manual fire detectors)
- Escape and rescue plans

5 LX LENS FOR FOCUSSED LIGHT



F1 LENS
Installation
height up to
3,5 m



The EN 54

Non-automatic fire detectors must be installed at a height of 140 cm (+/- 20 cm) above the floor.

